

TURNING AIR INTO SOLUTIONS.

Fan & Blower

Twin City



CAR WASH DRYER FANS

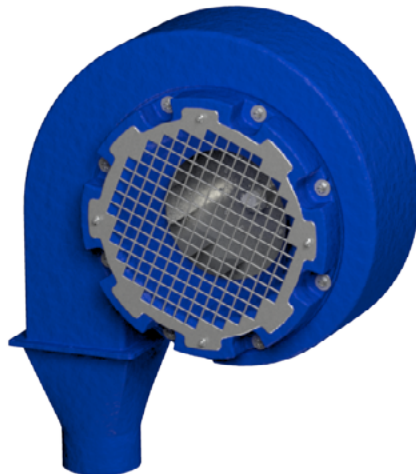
TWIN CITY FAN & BLOWER



Car Wash Drying Systems

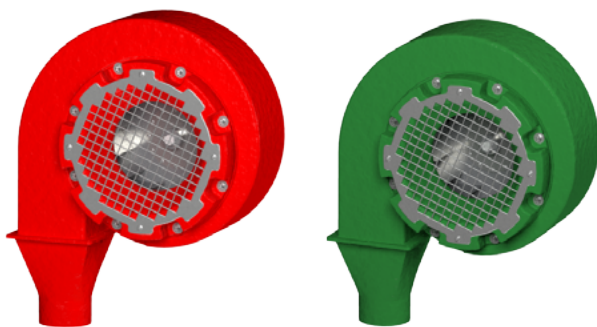


Standard Colors



Twin City Fan works closely with a large number of OEMs that manufacture car wash systems. We offer complete fans as well as a variety of parts including wheels, cones, drives and inlet plates. Dryer fans are typically built with 7.5 HP, 10 HP and 15 HP. Nominal 18 inch diameter backward curved steel wheels with 12-blade construction are generally used to minimize objectionable "pure" tones that can be irritating to the human ear. We also offer airfoil aluminum wheels using all welded extruded blades when a customer prefers aluminum rather than steel wheels.

Dryer fans are commonly mounted on the sides and top of arches located at the exit section of a typical car wash installation and are generally constructed from a high density plastic material to prevent corrosion. The special projected mounting of the inlet cone to the housing offers higher outlet velocities, which allows for faster drying times. We also offer special plastic nozzles to obtain yet higher velocity air for optimum drying. Twin City Fan has become a leader in the Car Wash Dryer market and is known for supplying high performance fans with unmatched durability and reliability.

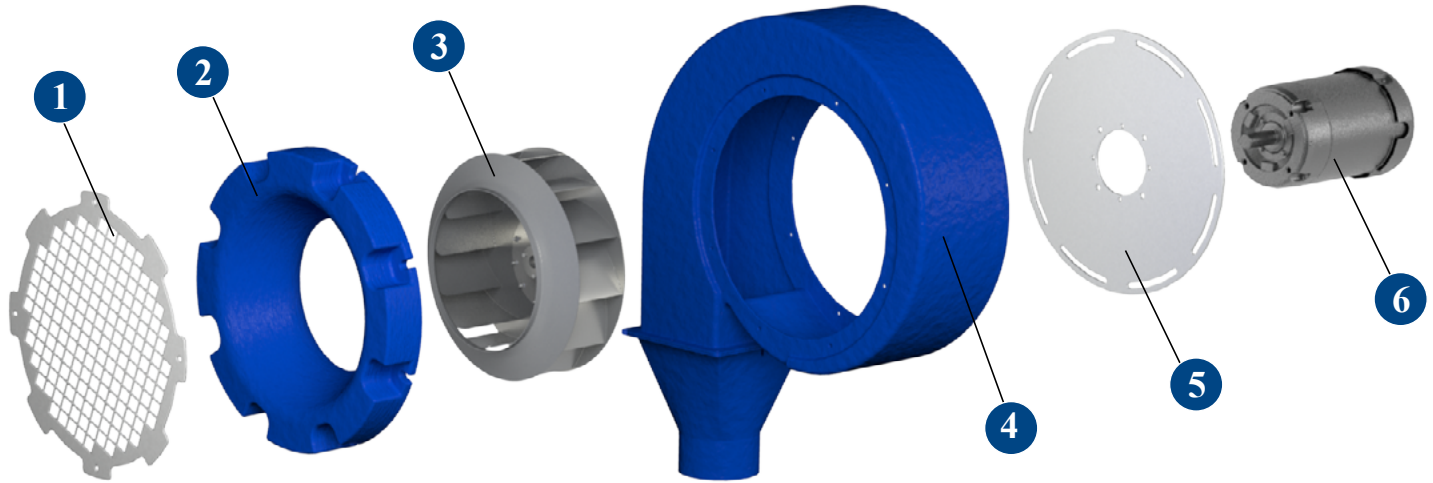


Available in Custom Colors

Fan & Blower
Twin City

CAR WASH DRYER FANS

Fan Components



- 1 Inlet Screen:** Aluminum Construction for corrosion resistance.
- 2 Inlet Cone:** Made out of plastic and specially designed to be installed largely outside of the fan housing to achieve higher exit velocities for better drying results.
- 3 Wheel:** Zinc Plated or Powder Coated Steel is standard for better corrosion protection. Twelve-bladed wheel design flattens the sound spectrum and reduces the dominance of pure tones resulting in “less objectionable” noise. Statically and Dynamically balanced for trouble free operation.
- 4 Plastic Fan Housing:** Designed to be field rotatable to various discharge angles. Factory Drilled Flanged Outlet allows for easy bolting of the various types discharge nozzles. *Shown with optional bolted square to round plastic outlet nozzle.*
- 5 Aluminum Drive/Motor Plate:** Slotted for easy field adjustment of the fan orientation. Also, drilled for flange mounting of 7.5 HP, 10 HP and 15 HP motors.
- 6 Motor:** 7.5 HP, 10 HP, 15 HP - 3600 RPM. 200/230 - 460/60 Hz, TEFC premium efficiency. Available with Flange and Feet mounting.

Fan Performance - 60 HZ.

MODEL	MOTOR	WHEEL DIA.	AIR FLOW @FAN OUTLET	AIR FLOW @ ROUND NOZZLE	EXIT VELOCITY @ FAN	EXIT VELOCITY@ ROUND NOZZLE
182 BCS-100-78	15 HP/3600 RPM	18.25 IN.	6800 CFM	3800 CFM	120 MPH	180 MPH
182 BCS-93-78	10 HP/3600 RPM	17.00 IN.	6050 CFM	3460 CFM	107 MPH	164 MPH
182 BCS-90-60	7.5 HP/3600 RPM	16.43 IN.	4700 CFM	3150 CFM	84 MPH	149 MPH

NOTE: Twin City Fan does not supply the mounting arches/structures.

Dimensional Drawing

Size 182 7.5 HP, 10 HP, & 15 HP Motors

